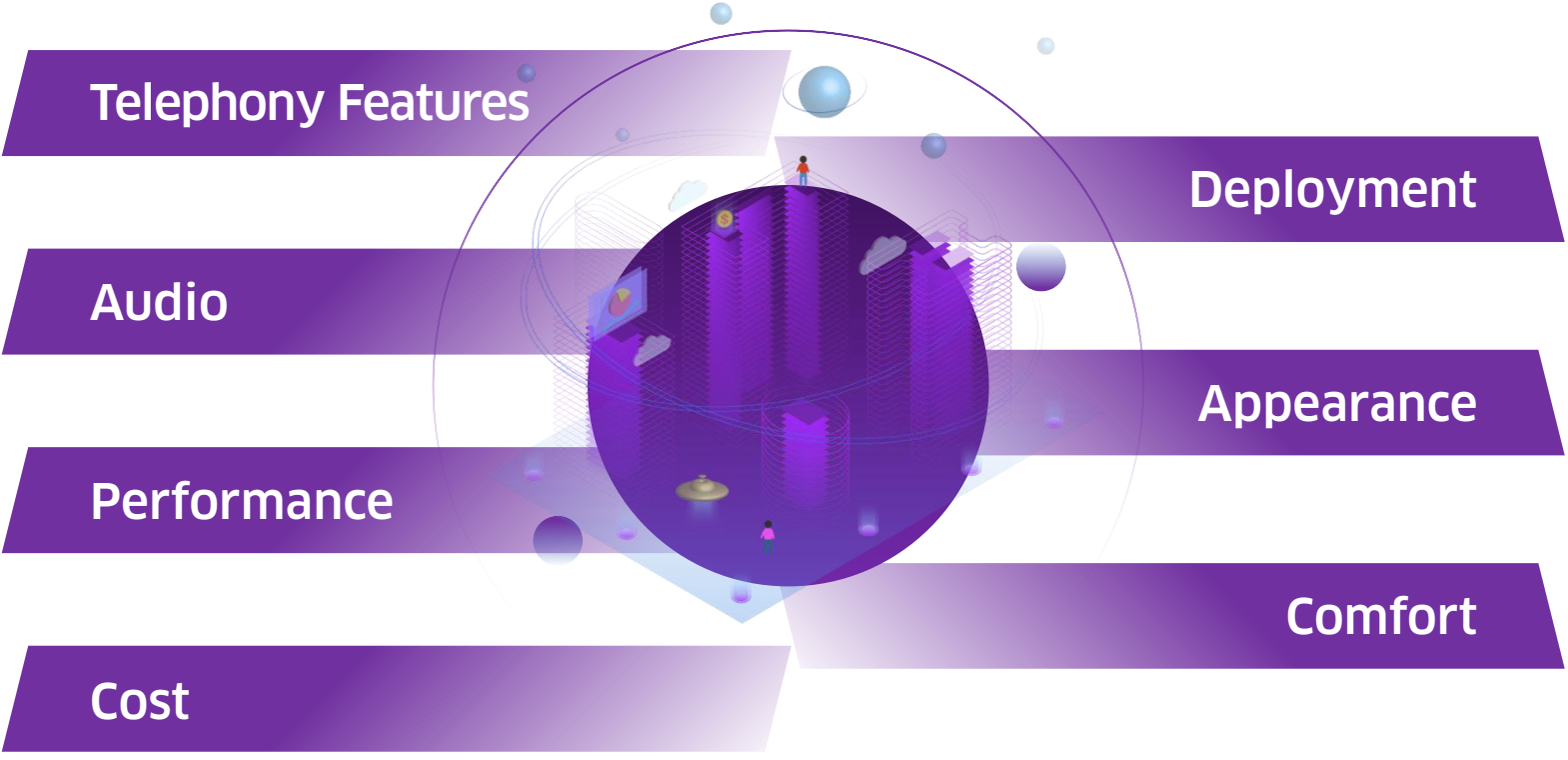


High-Performance Entry-level DeskPhones H3P, H3G, H6 SIP deskphones

How to select entry-level deskphones for office and call center staff?



3 new models: H3P, H3G, H6

Appearance

The three models follow the Halo classic design style and are good options for clean desktop lovers.

- 2.8-inch large screen improves customer experience
- Dimensions (Length x Width x Height): 214 mm x 191 mm x 47 mm
- Adjustable stand for two-angle display
- Wall mount (optional accessory)
- Blue LED indicators



132 x 64 B&W Backlit Display



H3P

H3G

320 x 240 Color Display

Telephony Functions

Address basic call demands, including incoming call / outgoing call / rejection, call forwarding / call waiting / call hold / call resume, redial, speed dial, mute / unmute, do not disturb (DND), auto answer, and voicemail.

- Local 5-party conference
- 1,000 call logs
- 1,000 contacts



H6

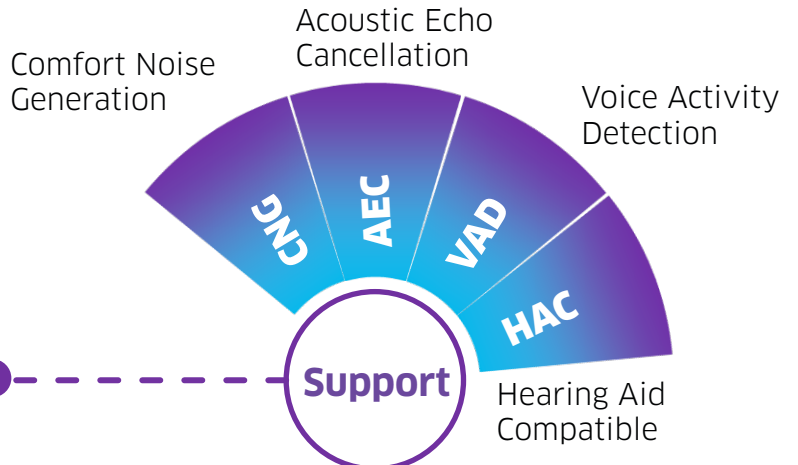
SIP Accounts

- H3P and H3G: 3 SIP accounts.
- H6: 4 SIP accounts.

Audio

Adopt the unique broadband audio technology of ALE to support clear full-duplex hands-free calls and high-definition broadband handle calls.

- Codec: Opus (NB and WB), G.722, ILBC, G711 (A-law and u-law), G.729AB
- DTMF: In-Band, RFC 2833/4733, SIP INFO



Performance

Selected components maintain high performance in harsh environments.

- Quick boot
- Smooth running
- Stable connection



Ports of H3P, H3G

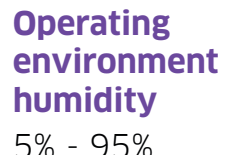
- Dual RJ-45 100M Ethernet ports (H3P)
- Dual RJ-45 1000M Ethernet ports (H3G)
- RJ-9 headset connector

Ports of H6

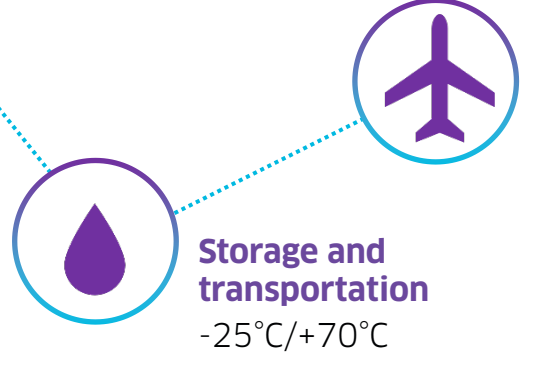
- Dual RJ-45 1000M Ethernet ports
- RJ-9 headset connector
- USB Type-A port



Operating environment temperature
-5°C to +45°C



Operating environment humidity
5% - 95%



Storage and transportation
-25°C/+70°C

Comfort

Handset and keys in ergonomic design

- The handset radian fits the palm so that the user will feel less fatigued even holding the phone for a long time
- The handset material can reduce slippery
- The concave radian of digital keys properly fit finger pulp
- On-hook through Hall sensor to prevent accidental on-hook, reduce noise, and extend the service life



Deployment, Operation and Maintenance

Easy massive deployment; lower operation and maintenance cost.

- Be deeply compatible with multiple platforms
- Support EDS and EPS deployment platforms



Energy saving, reducing the operation and maintenance cost.

- H3P and H3G have reached PoE class 1
- H6 has reached PoE class 2